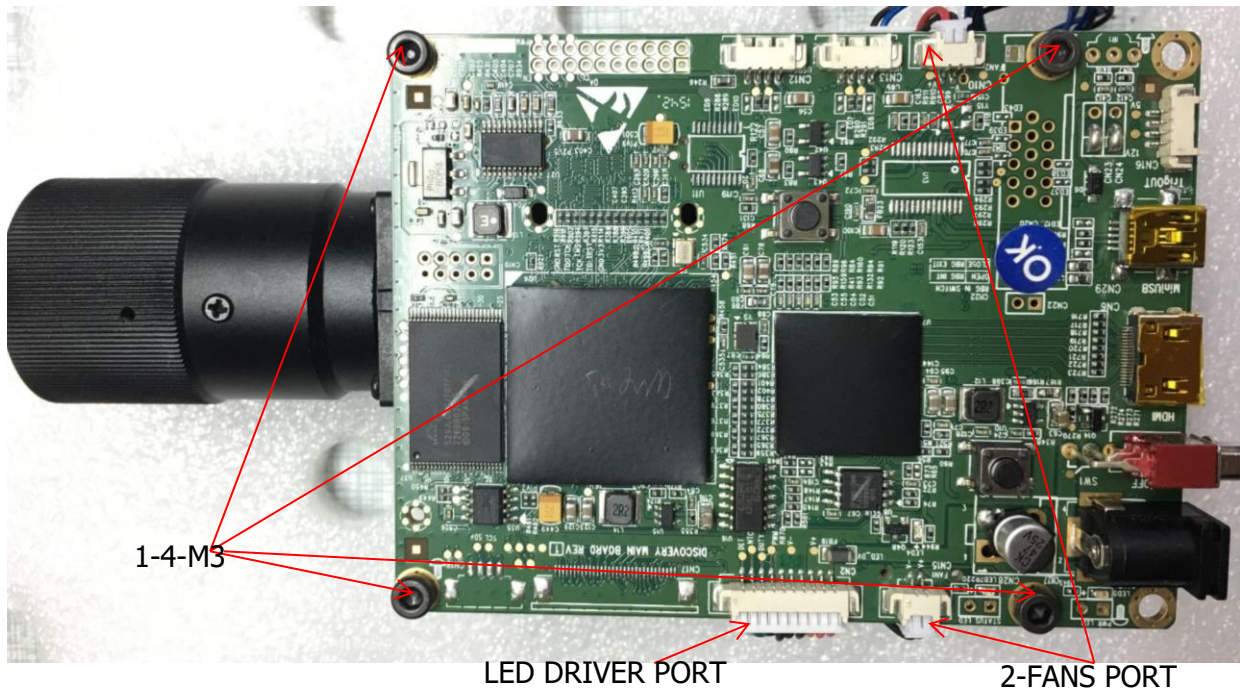
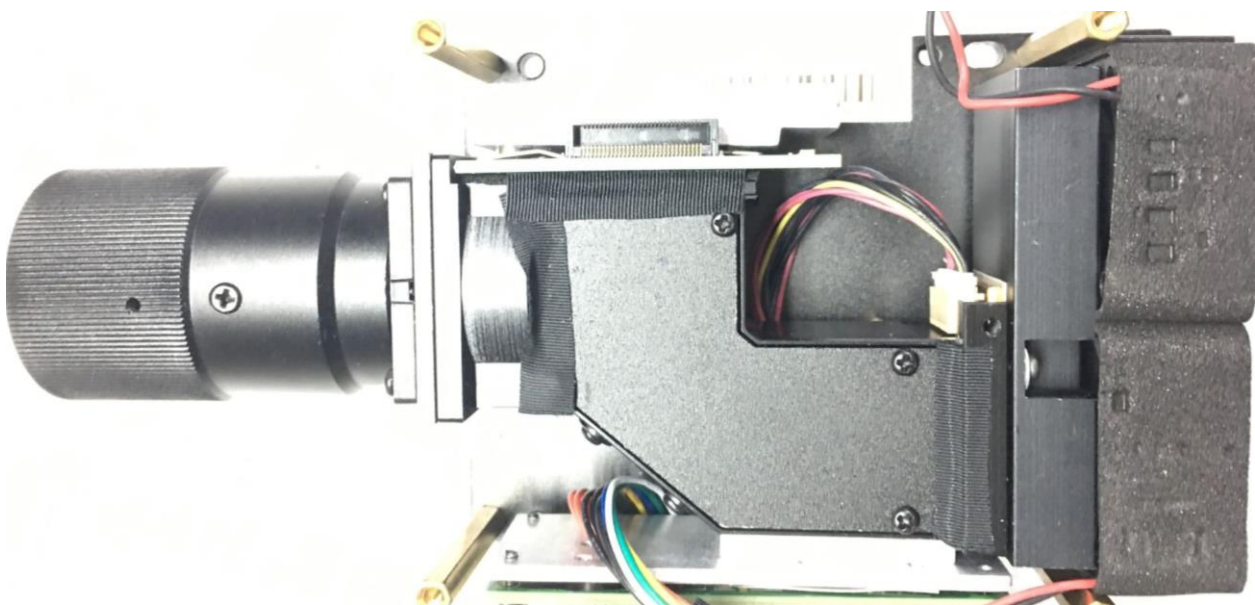


Replace the DMD SOP

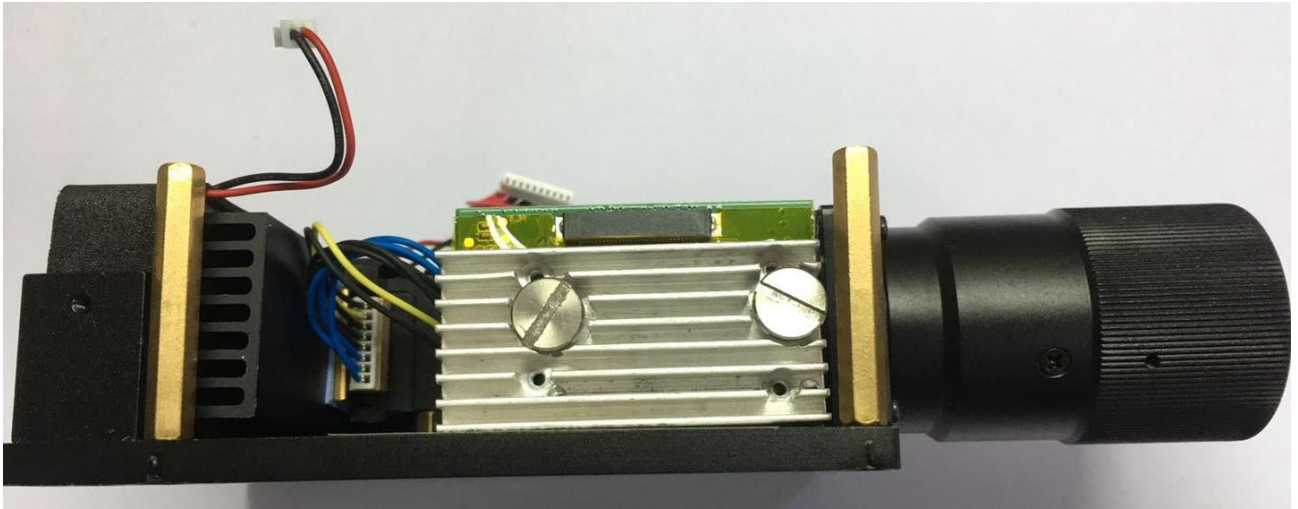
1. Remove 4 *M3 screw.



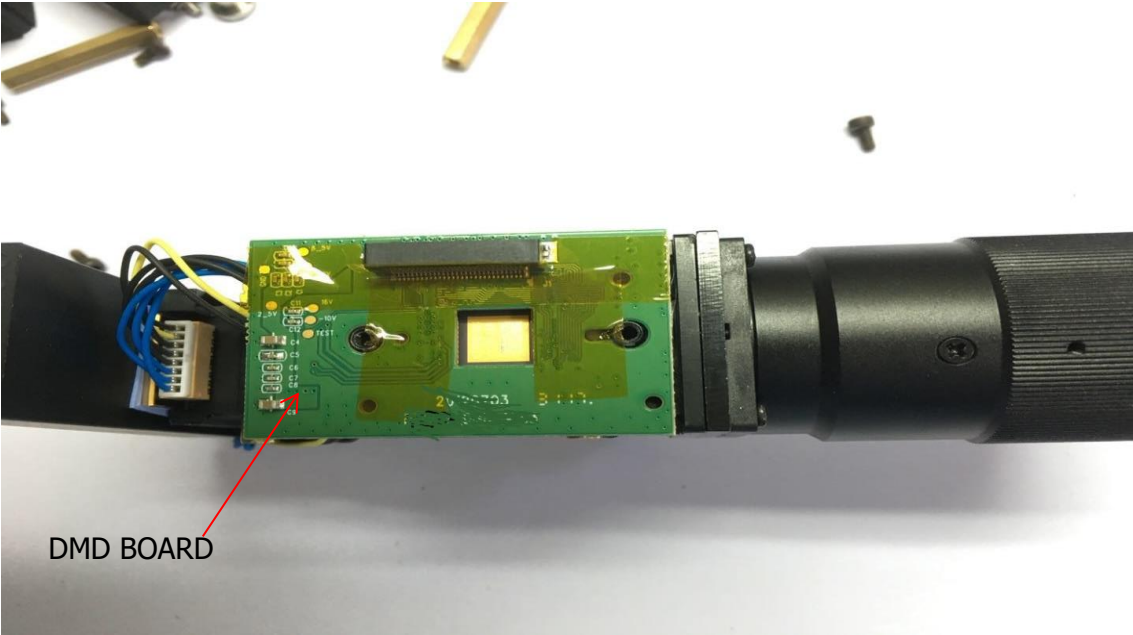
2. Remove main board



3. Remove 2 *M2.5 special screw



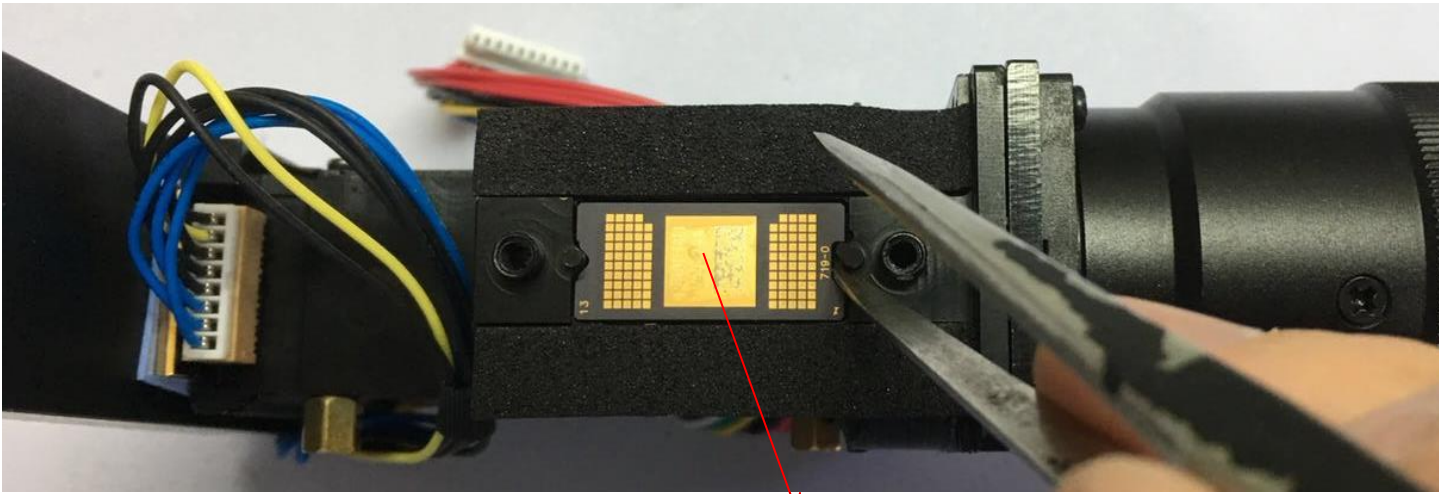
• 4. Remove DMD Heat-sinking , leaf spring ; DMD board



- 5. Remove the defective DMD; them replace the NEW DMD;



RTIR PRISM



DMD

NOTE:

1. KEEP THE RTIR PRISM AND DMD COVER GLASS CLEANLY
2. PUSH THE DMD TO THE LEFT;

6 Re-assemble again according to the from 5 to 1 steps;